

Sharp AR-C360P

Software Installation Guide

Table of Contents

Network Installation.....	2
Windows	2
Novell	7
Windows® Installation	8
USB Connection	8
Parallel Connection	11
Macintosh® Installation	13
OS 9.2 or above	14
OS 10.2.4 or above	16
Service and Support	18

About this Guide

This guide describes the initial printer driver installation. For more detailed information, refer to the *EFI User Software Installation Guide* and *EFI Configuration Guide* provided on the User Documentation CD (CD3).

The general steps for installing the software are as follows:

- Install the PostScript printer driver or PCL printer driver and corresponding printer driver files.
- Set up the printer driver to communicate with the Fiery.
- Install Fiery utilities and user software.

Configure Fiery utilities and user software

You must also configure either a local connection for printing directly to your printer or a network connection for printing over a network.

NOTE

A full set of user documentation, where procedures are described in detail, is provided on the User Documentation CD (CD3).

Network Installation

Windows

Selecting a printer driver in Windows

Select a driver appropriate for your application.

Fiery PostScript printer driver

Use this driver for high-resolution color graphics applications and pre-press graphic proofing. This driver also includes advanced features which may only be used by a network system administrator.

PCL printer driver

PCL and PCL6 printer drivers are included mainly for compatibility with legacy systems.

You can install both drivers and use either one depending on your application. However, each driver must be installed individually.

CAUTION!

Do not connect this product to an uninterruptible power supply (UPS). For further information please contact your Sharp dealer or www.sharppusa.com.

Be sure to use the 15A AC power cord supplied with the printer. Use of a power cord NOT supplied with this printer, or an extension cord, may result in overheating, and could be a safety hazard.

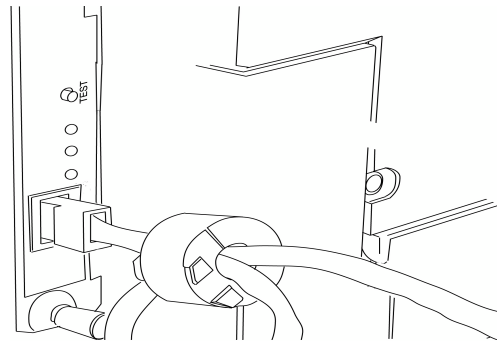
1 Install the Ferrite Core

IMPORTANT!

This safeguard is an FCC requirement.

In order to reduce electromagnetic interference—"noise" that interferes with TVs or other appliances—you must place the enclosed ferrite core on the network cable connected to your printer. Here is how to do it:

1. Disconnect the network cable from the printer, if necessary.
2. Loop the cable if necessary to keep the ferrite core in place.

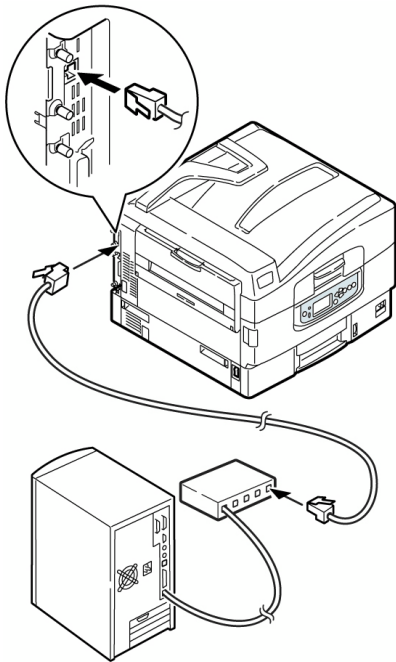


3. Place the open core about 1 inch from the cable connector on the printer end.
4. Press the two halves of the core together until they click shut.

Network Installation

Windows (cont'd)

2 Connect the Ethernet Interface



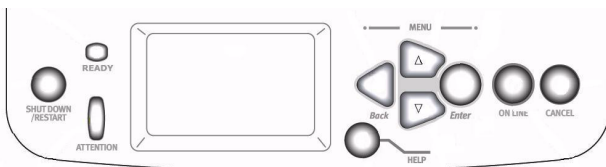
1. Switch off the printer and computer.
2. Remove the protective cover from the network connector on the printer.
3. Connect the Ethernet cable between the print and the Ethernet hub.

NOTE

For more information, see the Configuration Guide on the User Documentation CD.

3 Assign an IP address to the printer

If you are not using DHCP, you need to obtain an IP Address from your network Administrator and enter it using the front panel:



1. Confirm that the printer displays [Ready to print].

2. Press ∇ key until [Admin Setup] appears. Press the Enter key.
3. Continue to Setup? displays. Press ENTER to select Yes. The printer goes offline and Running Setup displays. This will take about a minute.
4. The Setup Menu displays, press ∇ to select Network Setup. Press ENTER.
5. Press ∇ to select Protocol Setup. Press ENTER.
6. Press ∇ to select TCP/IP Setup. Press ENTER.
7. Press ∇ to select Ethernet Setup. Press ENTER.
8. TCP/IP Ethernet displays. Select YES and press ENTER. Enable AutoIP Config? displays. Select NO. Press ENTER.
9. The default IP Address displays. Use Δ or ∇ to change each octet. Press ENTER to proceed to the next octet or to leave the octet unchanged.
10. Subnet Mask displays. Repeat instructions in step 9.
11. TCP/IP bound to Ethernet displays. Press ENTER.
12. Gateway Address displays. Repeat instructions in step 9.
13. Press ENTER to exit TCP/IP Setup, Protocol Setup, and Network Setup.
14. Select Yes and press ENTER to Save Changes. Press ENTER to Exit the Setup Menu.
15. Printer restarts the server and initializes. Ready to Print displays.

Network Installation

Windows (cont'd)

4 Install the Fiery PostScript® Printer Driver

1. Insert the drivers CD (CD1) into your CD-ROM drive. The CD will autorun.

If it doesn't autorun, click Start → Run → Browse. Browse to your CD-ROM drive. Double-click Install.exe. Click OK.

2. Select your language.
3. Click Next to accept the License Agreement.
4. Select Custom Install to install the printer driver and the software utilities.

To install only the printer driver, select Minimal Install and skip the next step.

5. Click the Printer Driver Installer button.
6. Select Network Printer. Click Next.
7. Select Directly to the Network using TCP/IP.
8. The TCP/IP Connection screen displays. Select Search Address. Click Next.
9. Highlight your printer model. Click Next.
10. Select Printer Emulation. Click Next.
11. Follow the on-screen instructions to complete the installation.

Discover the printer

The LPR Utility is automatically installed with the network printer driver. To discover the printer, do the following:

1. Click Start → Programs → Sharp → LPR Utility.
2. Click Remote Print. Then, click Add Printer.
3. Select your printer model from the drop-down list, then either enter the IP Address manually, or click Discover and wait for the printer to be discovered. Click OK.

NOTE

In order to send documents to the printer, the LPR utility must be installed. LPR installs automatically when the drivers are installed using the Menu Installer as instructed here. If drivers are installed using Windows Add Printer Wizard, you must manually load the LPR Utility from the Menu Installer on CD1. To do this, click Custom Install → Network Software → InstallationConfig → Sharp LPR.

5 Install Printer Utilities

Select Custom Install in the Menu Installer on the driver CD (CD1). Choose from these software tools:

• Network Software

Click Installation → Config to select utilities for network printing, installation, and configuration.

Click Administration Tools to select network management tools.

- Productivity Software - Select Windows printer software.

Follow the on-screen instructions to install the utilities.

Network Installation

Windows (cont'd)

6 Install EFI Fiery Utilities

1. Insert **EFI Utilities CD (CD2)**, into your CD-ROM drive.
2. Select your language.
3. Click Next to accept the License Agreement.
4. Select your printer model. Click Next.
5. Select Quick Install to install only Command WorkStation, or, select Custom Install to install your choice of these EFI tools:
 - > Command WorkStation
 - > Fiery Mail Port
 - > Fiery Printer Delete
 - > Fiery Downloader
 - > Fiery ColorWise Pro Tools

NOTE

If the computer will not be used by an AR-C360P administrator, Command WorkStation may not be required.

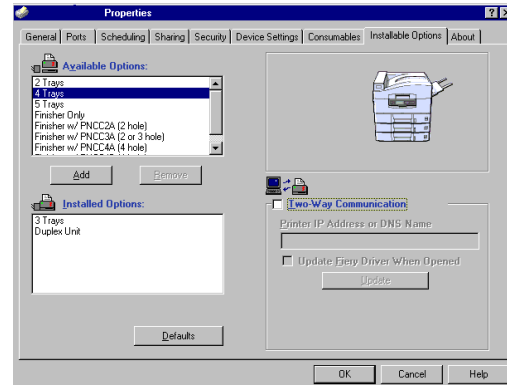
7 Activating Printer Options

After you have completed the printer driver installation, you must configure the printer for the installed options. You can configure the options manually or, for TCP/IP network connections, you can use the Two-Way Communication feature to configure the options automatically.

To Configure Options Manually

1. Click Start → Settings → Printers.
2. Right click the Sharp AR-C360P EFI Fiery icon.
3. Click Properties.
4. Click the Installable Options tab.

In PCL emulation, click the Device Options tab and specify the options installed on the AR-C360P.



5. Select an installed option from the Available Options list.
6. Click Add to move the option to the Installed Options list.
7. Click Apply. Click OK.

To Configure Options Automatically

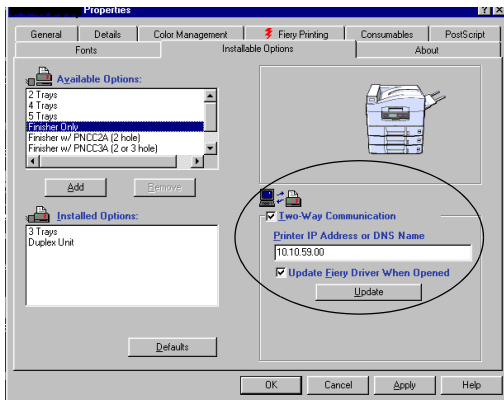
If you have a TCP/IP-enabled network, you can automatically update your printer driver to reflect the options currently installed on the printer.

1. Click Start → Settings → Printers.
2. Right click the Sharp AR-C360P EFI Fiery icon.
3. Click Properties.
4. Click the Installable Options tab.

Network Installation

Windows (cont'd)

5. Select Two-Way Communications.



6. Type the Fiery IP address or DNS name.

7. To display the printer's current default settings when opened, select Update Fiery Driver When Opened.

8. Click Update. Click OK.

8 Install the User Documentation

1. Insert the User Documentation CD (CD3) into your CD-ROM drive. The CD will autorun.

If it doesn't, click Start → Run → Browse. Browse to your CD-ROM drive. Double-click Install.exe. Click OK.

2. Follow the on-screen instructions.

Network Installation

Novell

1 Install the Utility

This utility installs, configures, and manages Sharp network print server devices.

1. Insert the printer driver CD (CD1) into your CD-ROM drive. The CD will autorun.

If it doesn't autorun, click

Start → Run → Browse. Browse to your CD-ROM drive. Double-click Install.exe. Click OK.

2. Select your language.
3. The Licence Agreement appears. Click Next to accept.
4. Select Custom Install.
5. The Menu Installer screen appears.
6. Click the Network Software button.
7. Click the Installation/Config button.
8. Click the Admin Mgr/Quick Setup button.
9. Setup Assistant displays. Select your language.
10. Follow the on-screen instructions to complete the installation.

Note: You can either install the software while running the utility off the CD, or you can choose to install the utility on your computer and then launch it from there.

2 Install the Printer on a Novell® Network

Novell Client for Windows must be loaded, the Admin Manager software must be running, and you must be logged in to NDS.

1. Run Discover.
2. Select Setup from the menu.
3. Click Create a NetWare Queue.
4. Select NDS Mode. Click Next.
5. Select the container. Click Next.
6. Select Print Server Mode. Click Next.
7. Select or create a queue. Click Execute.

Launching the Utility

To launch the utility click
Start → Programs → Sharp Setup
Utility → Admin Manager.

3 Activating Printer Options

If your printer has optional paper trays or a finisher installed, they must be activated in the printer driver. See page 6 for instructions on how to do this.

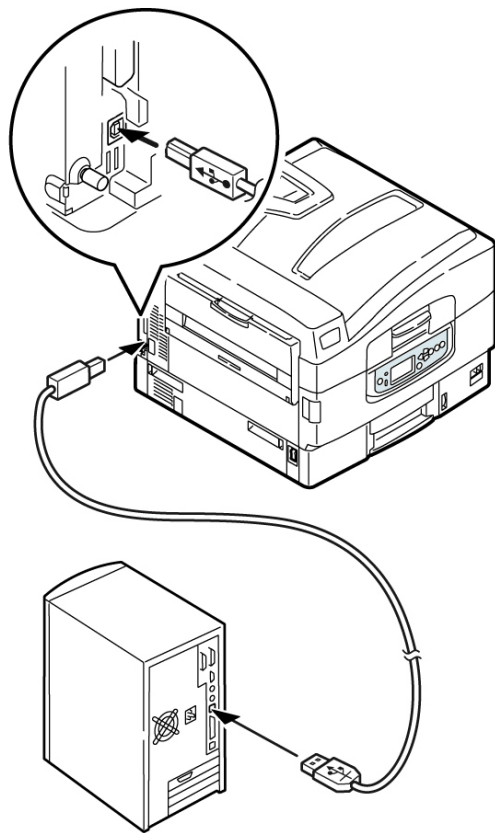
NOTE

For more information, see the Configuration guide on the User Documentation CD.

Windows® Installation

USB Connection

1 Connect the USB Cable



For connection to a PC running Windows 98 or above

Requires a USB cable version 2.0 or above. *Printer operation is not assured if a USB compatible device is connected concurrently with it.*

1. Turn printer power OFF.
2. Connect USB cable between the printer and computer.

2 Install the Fiery PostScript Printer Driver

NOTE

The installation procedure may vary slightly depending on the operating system you are using. Drivers are provided for Windows® XP, 2000, Me, and 98.

1. Make sure the cable is connected to your printer and PC and your printer is turned OFF.
2. Insert the printer driver CD (CD1) into your CD-ROM drive. The CD will autorun.

If it doesn't, click Start → Run → Browse. Browse to your CD-ROM drive. Double-click Install.exe. Click OK.
3. Select your language.
4. The License Agreement appears. Click Next to accept.
5. Select Custom Install to select software tools to be installed with the printer driver.

To install only the printer driver, select Minimal Install and skip the next step.
6. The Software Installation screen appears. Click the Printer Driver Installer button.
7. Click Local printer. Click Next.
8. Select the USB port. Click Next.
9. Select your printer model.
10. Select the PS (PostScript) printer emulation. Click Next.
11. If prompted, type a printer name for your printer. Click Next.
12. If prompted, select "do not share this printer" Click Next.
13. Drivers are copied. If Connect cable message appears, follow on-screen instructions.
14. Switch the printer ON.

Windows® Installation

USB Connection (cont'd)

NOTE

If New Hardware Found Wizard displays:

Win 98: Select "Search for the best driver for your device". Click Next. Select CD-ROM drive, clear other choices. Click Next twice.

Win XP and Win Me: Select "Install the software Automatically" or "Automatic Search...." Click Next.

15. Click Finish to complete the Installation.

16. If Connect cable screen is open, click Finish to close it.

To print a test page:

17. Click Start → Settings → Printers.

18. Right-click the printer icon.

19. Click Properties → General Tab → Print Test Page.

To Install the PCL Printer Driver as Well

NOTE

If you have installed the PostScript driver, you must reboot your system.

1. Make sure the printer is powered OFF.
2. Follow the instructions to install the PostScript driver. When prompted to select a port for your printer, select LPT1 temporarily.
3. When prompted to select the printer emulation, select PCL.
4. When installation is complete, click Finish.
5. Select Restart if prompted.

Enable the USB port:

6. Click Start → Settings → Printers.
7. Right click the printer icon. Then, click Properties.
8. On the Ports (or Details) tab, select USB001 port (or OP1USB1) in the Print to the following port list.
9. Click OK. Then, close the Printers dialog box.

To print a test page:

10. Click Start → Settings → Printers.

11. Click the General Tab. Click the Print Test Page button.

3 Install Printer Utilities

1. On the printer driver CD (CD1) select Custom Install.
2. Click Productivity Software and choose Windows printer software to install.

4 Install EFI Fiery Utilities

1. Insert the EFI Utilities CD (CD2), into your CD-ROM drive.
2. Select your language.
3. Click Next to accept the License Agreement.
4. Select your printer model. Click Next.
5. Select Quick Install to install only Command WorkStation, or, select Custom Install to install your choice of these EFI tools:
 - > Command WorkStation
 - > Fiery Mail Port
 - > Fiery Printer Delete
 - > Fiery Downloader
 - > Fiery ColorWise Pro Tools

Windows® Installation

USB Connection (cont'd)

5 Install the User Documentation

1. Insert the User Documentation CD (CD3) into your CD-ROM drive. The CD will autorun.

If it doesn't autorun, click

Start → Run → Browse. Browse to your CD-ROM drive. Double-click Install.exe. Click OK.

2. Follow the on-screen instructions.

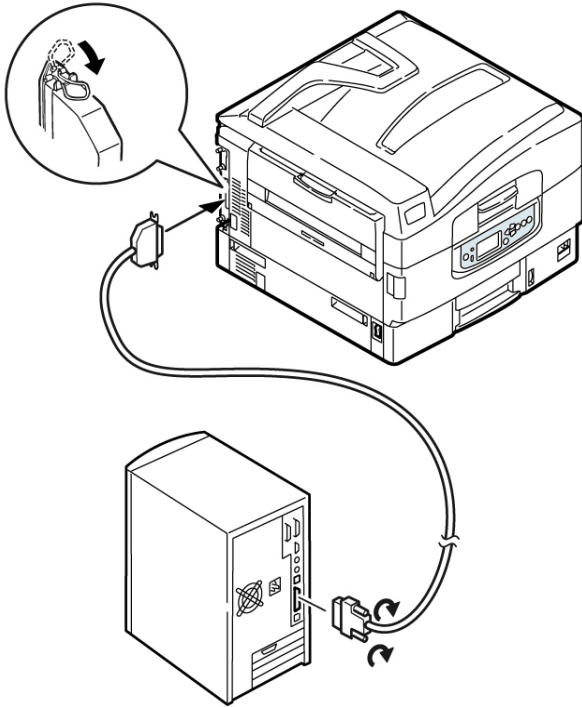
6 Activating Printer Options

If your printer has optional paper trays or a finisher installed, they must be activated in the printer driver. See page 6 for instruction on how to do this.

Windows® Installation

Parallel Connection

1 Connect the parallel Interface



For direct connection to a PC

This port requires a bi-directional (IEEE 1284 compliant) parallel cable. *Cable must be shielded and UL and CSA approved.*

1. Make sure the printer is powered off.
2. Connect a parallel cable between the printer and computer.

2 Install the Fiery PostScript Printer Driver

NOTE

The installation procedure may vary slightly depending on the operating system you are using. Drivers are provided for Windows® XP, 2000, Me, and NT 4.0.

1. Make sure the cable is connected to your printer and PC and your printer is turned OFF.
2. Insert the driver CD (CD1) supplied with your printer into your CD-ROM drive. The CD will autorun.

If it doesn't autorun, click

Start → Run → Browse. Browse to your CD-ROM drive. Double-click Install.exe. Click OK.

3. Select your language.
4. The License Agreement appears. Click Next to accept.
5. Select Custom Install to select software tools to be installed with the printer driver. To install only the printer driver, select Minimal Install and skip the next step.
6. The Software Installation screen appears. Click the Printer Driver Installer button.
7. Click Local printer. Click Next.
8. Select the LPT1 port. Click Next.
9. Select your printer model.
10. Select the PS (PostScript) printer emulation. Click Next.
11. If prompted, type a printer name for your printer. Click Next.
12. If prompted, select "do not share this printer." Click Next.
13. Follow the on-screen instructions to complete the installation. Click Finish.
14. Switch the printer ON.

To print a test page:

15. Click Start → Settings → Printers.
16. Right-click the printer icon.

Windows® Installation

Parallel Connection (cont'd)

17. Click Properties → General Tab → Print Test Page.

18. Click the Print Test Page button.

To Install the PCL Printer Driver as Well

NOTE

If you have installed the PostScript driver, you must reboot your system.

Follow the instructions to install the PostScript driver. When you are prompted for the Printer Emulation, select PCL.

3 Install Printer Utilities

1. On the printer driver CD (CD1) select Custom Install.
2. Click Productivity Software and choose the Windows printer software to install.

4 Install EFI Fiery Utilities

1. Insert EFI Utilities (CD2), into your CD-ROM drive.
2. Select your language.
3. Click Next to accept the License Agreement.
4. Select your printer model. Click Next.
5. Select Quick Install to install only Command WorkStation, or, Select Custom Install to install your choice of these EFI tools:
 - > Command WorkStation
 - > Fiery Mail Port
 - > Fiery Printer Delete
 - > Fiery Downloader
 - > Fiery ColorWise Pro Tools

5 Install the User Documentation

1. Insert User Documentation CD (**CD3**) into your CD-ROM drive. The CD will autorun.

If it doesn't, click Start → Run → Browse. Browse to your CD-ROM drive. Double-click Install.exe. Click OK.

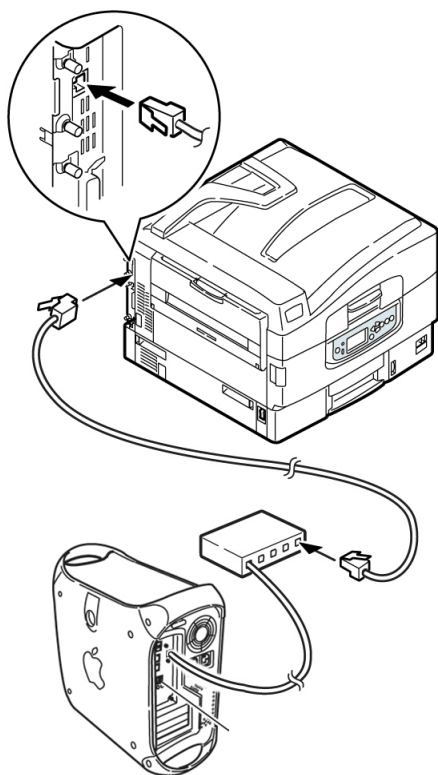
2. Follow the on-screen instructions.

6 Activating Printer Options

If your printer has optional paper trays or a finisher installed, they must be activated in the printer driver. See page 6 for instruction on how to do this.

Macintosh® Installation

Network Interface Connection



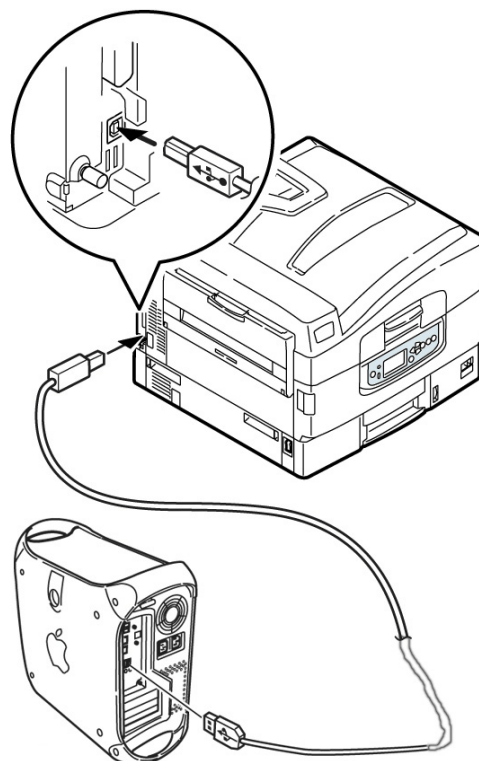
IMPORTANT!

Before connecting the network cable, install the Ferrite Core. See "1 Install the Ferrite Core" on page 2.

- Requires Mac® OS 9.2 or 10.2.4, and above, running on a Macintosh computer with EtherTalk interface.
- Ethernet cable is not supplied with the printer. Use an Ethernet crossover cable with RJ45 connectors at either end.

1. Turn the printer OFF.
2. Remove the protective cover from the network connector on the printer.
3. Connect your Ethernet cable to the network port on the printer server.
4. Connect the other end of the Ethernet cable to the network port.

USB Interface Connection



- Requires Mac OS 9.2 or above
- Printer operation is not assured if another USB compatible device is connected concurrently with it.
- If a USB hub is used, it must be connected directly to the computer.
- Depending on the size of the document, if the memory setting for the print monitor is low, you may not be able to print in the background. To correct for this, increase the memory setting for the print monitor.

1. Turn the computer and the printer OFF.
2. Connect the USB cable to the USB port on the computer.
3. Connect the other end of the cable to the USB port on the printer.

Macintosh® Installation

OS 9.2 or above

1 Install the Driver

1. Turn the printer ON, then turn the computer ON.
2. Place the driver CD (CD1), supplied with the printer, in the CD-ROM drive.
3. Double-click the Sharp CD icon that appears on the desktop.
4. Double-click the MAC icon.
5. Double-click the MAC OS 9 folder.
6. Double-click Mac Installer AR-C360P.
7. Click Continue.
8. The License Agreement appears. Click Accept to accept the terms.
9. Click Install for Easy Install to install PPD Files, Adobe PS Package, and Printing Plug-ins.

Select Custom Install to install your choice of Adobe PS Package, PPD Files, Adobe PS Options Plug-ins, SDM for MAC, Swatch Utility, Admin Setup Utility, Printing Plug-ins.

10. Click Install and follow the on-screen instructions.



11. Click Continue to install additional utilities.
12. When the installation is complete, click Quit.

2 Create the Desktop Printer for a Network

1. Activate Chooser from the Apple menu.
2. Select the Adobe PS Driver icon and highlight the printer name (print server ID#).
3. Click Create.
4. Select Sharp AR-C360P PPD. Click Select.
5. Close Chooser.

Note: For additional information, see Chapter 2, "Installing User Software on a Mac OS Computer" in the EFI Software User's Guide on the User Documentation CD (CD 3).

Macintosh® Installation

OS 9.2 or above (cont'd)

3 User Documentation

For additional information on using printer features as well as printer utilities, see the on-line documentation.

Requirements

- Microsoft Internet Explorer version 4.0 or higher and Acrobat Reader.

To Load

1. Insert the User Documentation CD (CD3) into your CD-ROM drive.
2. From the CD contents folder, drag the Manual folder to the desktop.

Macintosh® Installation

OS 10.2.4 or above

1 Install the Driver

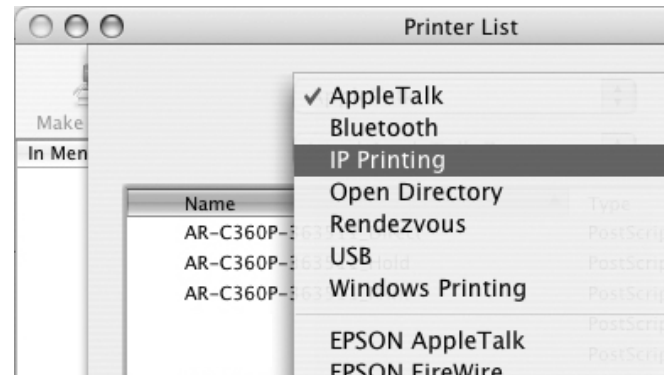
1. Turn the printer ON, then turn the computer ON.
2. Place CD 1, supplied with the printer, in the CD-ROM drive.
3. Double-click the Sharp CD icon that appears on the desktop.
4. Double-click MAC icon.
5. Double-click the OS X icon.
6. Double-click OS X Installer.
7. License Agreement appears. Click Accept to accept the terms.
8. Click the Install button.
9. Click Quit.

2 Add the Printer

1. To add the printer, run the Printer Setup Utility or Print Center.

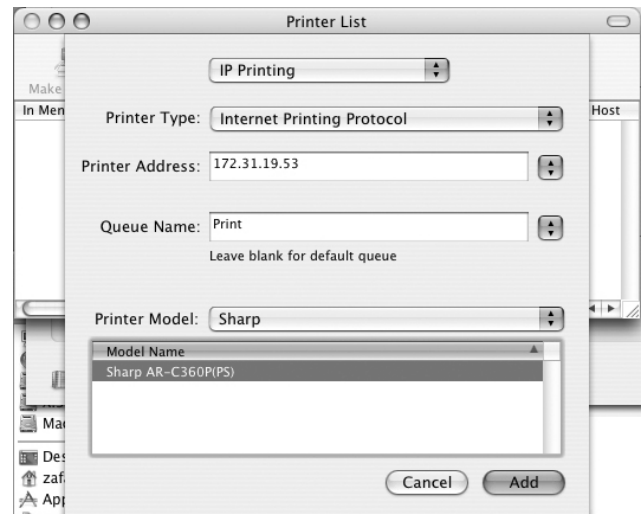
Note: The Printer Setup Utility is found in the Applications/Utilities folder.

2. Select Add.
3. Select the Protocol: IP Printing, Rendezvous, Bonjour, Appletalk, or USB.



Note: If you are using USB, select USB and disregard the following step.

4. Enter the printer's IP address.
5. From the Printer Model drop down menu, select the correct PPD for your printer model. Click Add.



Note: In order to use the IP Printing connection, you need an IP address. Also, you may need to enter the Queue name as "Direct," "Print," or "Hold" instead of the default blank.

6. After the printer is added, the Printer Info screen appears (OS 10.4). Printer options can be added as shown below.

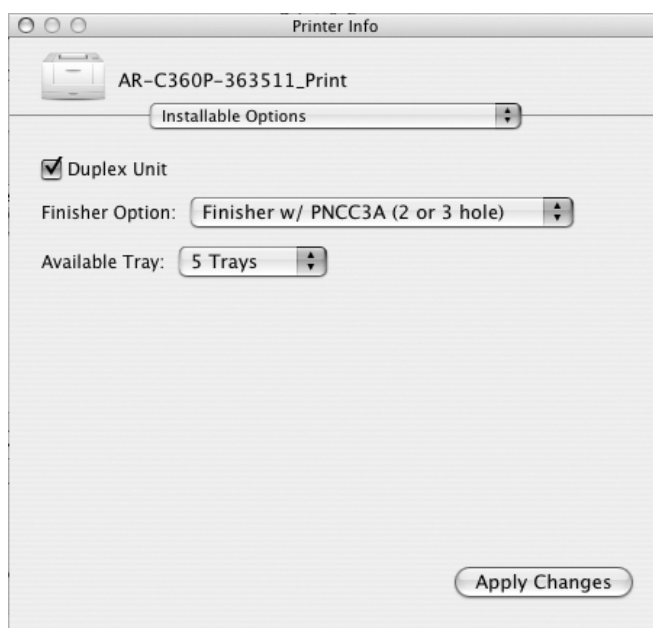
Macintosh® Installation

OS 10.2.4 or above (cont'd)

Install Printer Options

1. Go to the Printer Setup Utility.
2. Click Printer Info.
3. Select Duplex Unit.
4. Select the number of Available Trays.
5. Select Finisher Option.
6. Click Apply Changes.

Note: To select the Finisher Option, 4 or 5 trays must first be selected.



3 Install the Fiery EFI Utilities

1. Place CD2 in the CD-ROM drive.
2. Double-click the Sharp CD icon that appears on the desktop.
3. Double-click the MAC icon.
4. Double-click User Software.
5. Double-click the OS X icon.
6. Double-click Command Workstation LE.
7. Enter your login password. Click OK.
8. Accept the License Agreement.
9. Click Install.

Note: For additional information, see "Installing User Software on a Mac OS Computer" in the EFI Software User's Guide included on the User Documentation CD (CD3).

4 User Documentation

For additional information on using printer features as well as printer utilities, see the on-line documentation.

Requirements

- Microsoft Internet Explorer version 4.0 or higher and Acrobat Reader.

To Load

1. Insert the User Documentation CD (CD3) into your CD-ROM drive.
2. From the CD contents folder, drag the Manual folder to the desktop.

Service and Support

- Consult the Sharp Authorized Dealer where you purchased your printer.
- To find the authorized Sharp servicing dealer closest to you, please visit us on-line at www.sharpUSA.com.

Trademarks

Adobe and PostScript are trademarks of Adobe Systems, Inc. Which may be registered in certain jurisdictions.

Microsoft, Internet Explorer and Windows are either registered trademarks or trademarks of Microsoft Corporation in the United States and other countries.

Microsoft, MS-DOS and Windows are registered trademarks of Microsoft Corporation.

Apple, Macintosh, Mac and Mac OS are registered trademarks of Apple Computer.

Other product names and brand names are registered trademarks or trademarks of their proprietors.

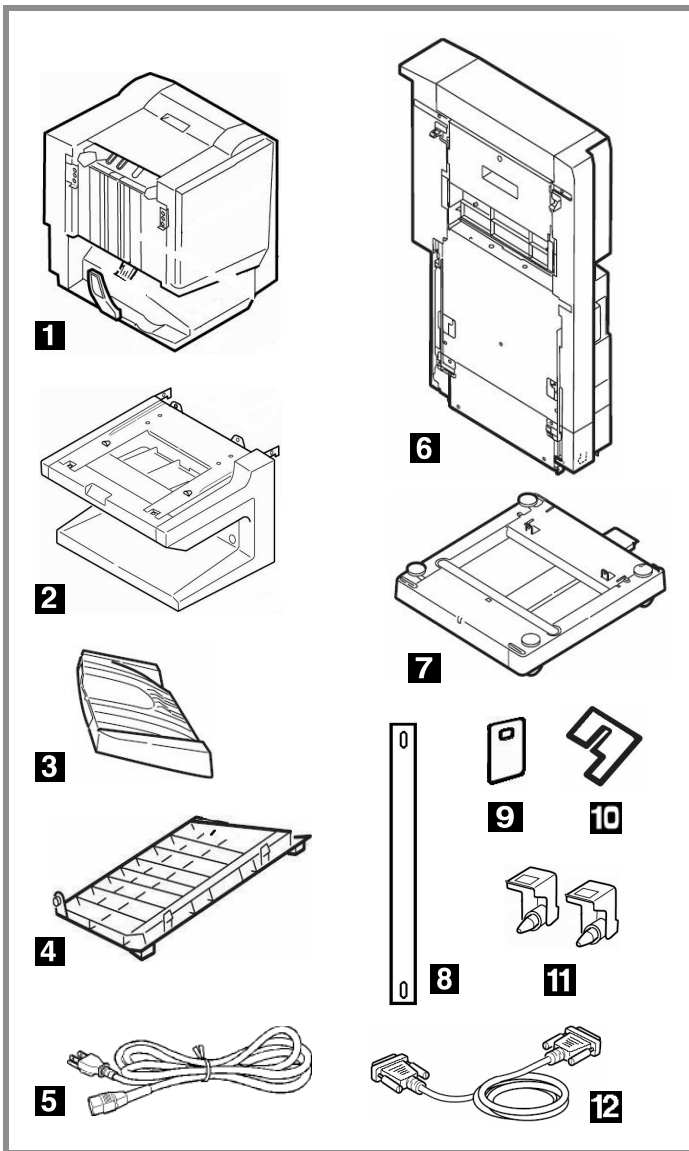
Command WorkStation, EFI, Fiery, the Fiery logo are registered trademarks of Electronics for Imaging, Inc., in the U.S. Patent and Trademark Office and/or certain other foreign jurisdictions.

All other terms and product names may be trademarks or registered trademarks of their respective owners, and are hereby acknowledged.

Pantone, Inc. is the copyright owner of color data and/or software which are licensed to Electronics for Imaging, Inc., to distribute for use only in combination with the products, or software of Electronics for Imaging, Inc. PANTONE Color Data and/or Software shall not be copied onto another disk or into memory except as part of the delivery of the Electronics for Imaging, Inc., products or software.

Finisher Unit Installation Guide

Components

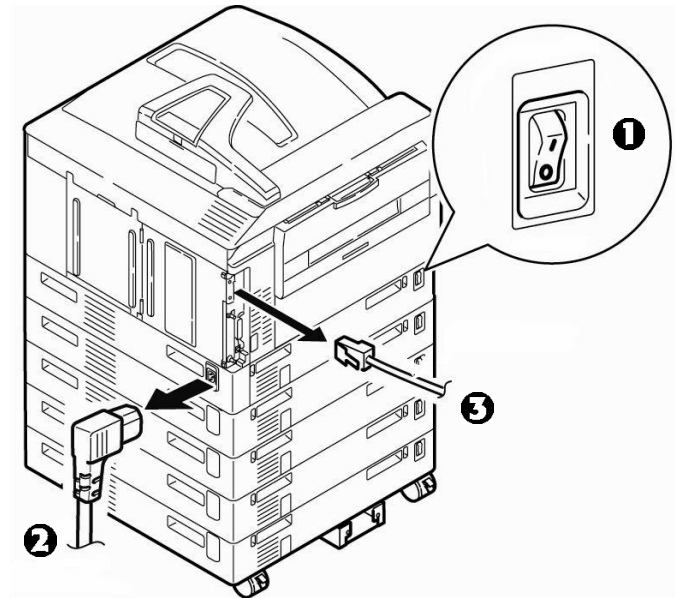


- | | |
|--------------------|--------------------------------|
| 1 Finisher Unit | 7 Inverter Stand |
| 2 Finisher stand | 8 Clear Band |
| 3 Finisher Stacker | 9 Band Stopper, Small |
| 4 Finisher Cover | 10 Band Stopper, Large |
| 5 Power Cord | 11 Metal Brackets |
| 6 Inverter Unit | 12 Cable (inverter to printer) |

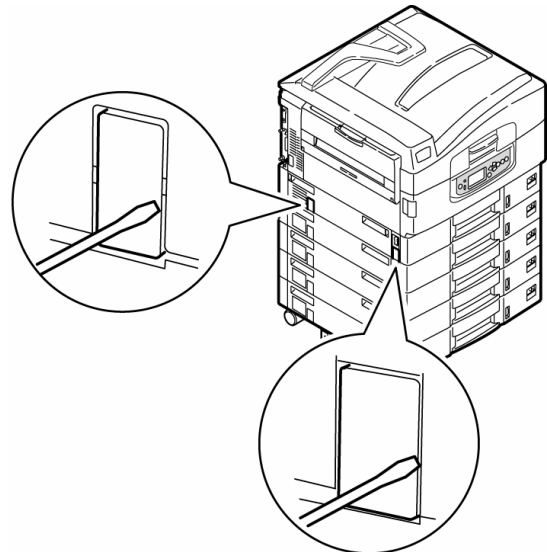
Not illustrated: Screws

Step 1: Prepare the Printer

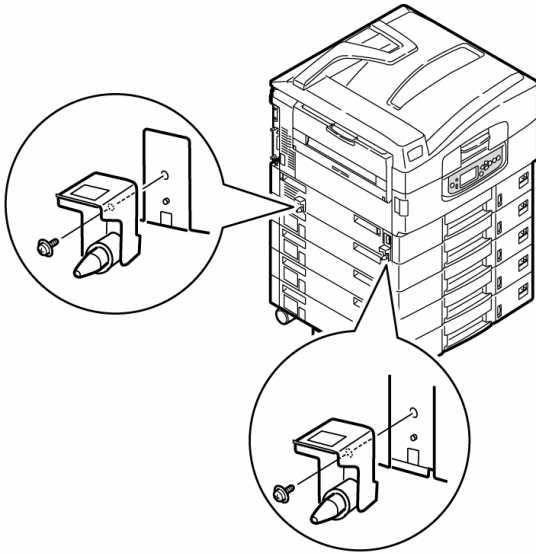
1. Turn the printer off (❶) and disconnect the power cord (❷) and interface cable (❸).



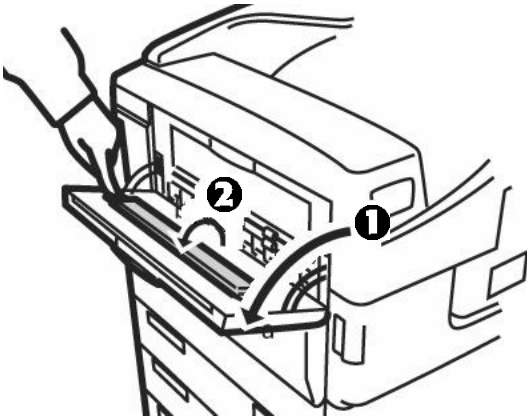
2. Using a screwdriver, remove the breakout panels on the side of the printer.



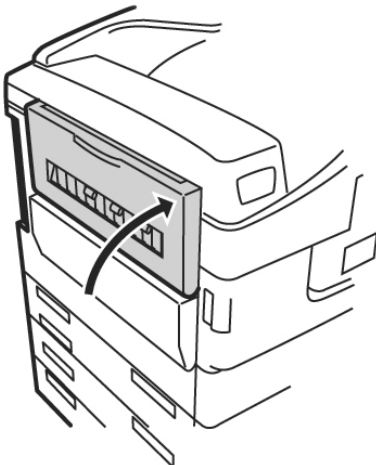
3. Install the metal brackets where the breakout panels were.



4. Open the face-up stacker (❶), then open the flap and press it onto the stacker surface (❷).



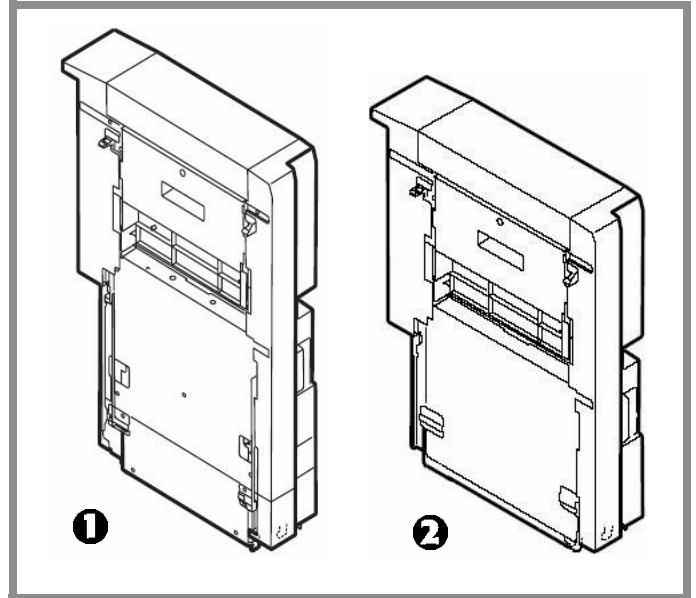
5. Close the stacker.



Step 2: Prepare the Inverter

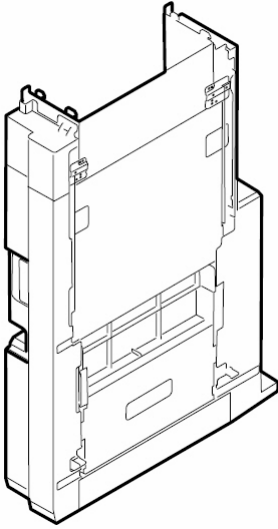
Before assembling the finisher, you must adjust the height of the inverter unit to match the finisher:

- ❶ Inverter as supplied
- ❷ Inverter changed for use with 4-tray finisher.

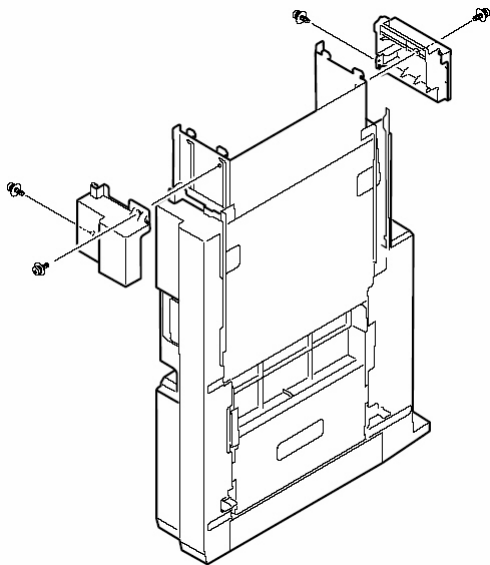


1. Unpack the inverter and remove any packing materials.

2. Remove the two bottom caps:
a. Turn the inverter over.

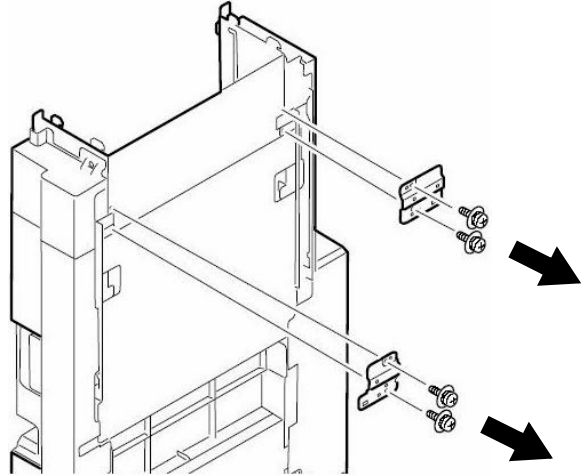


- b. Remove the two screws securing the bottom caps on either side of the inverter.

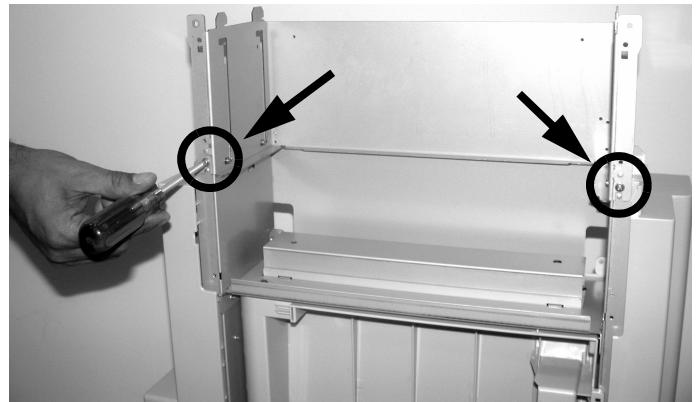


- c. Remove the end caps and store them along with the four screws in case you ever need to convert the unit back.

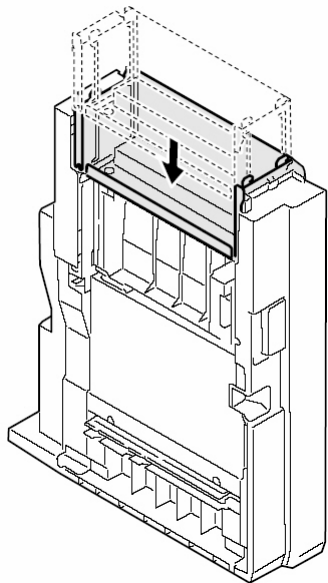
3. Turn the inverter around and remove the screws holding the metal brackets in place. Keep the screws and brackets handy: they are used to help secure the extension plate once it is repositioned.



4. Turn the inverter around and remove the two screws holding the extension plate. Keep them handy to reattach the plate once it is repositioned.



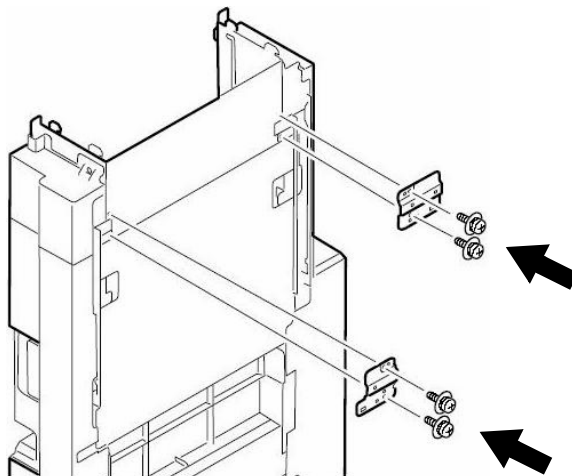
5. Pull forward on the extension plate to disengage the pins from the top channel stops, then slide it down into the inverter and push back to engage the pins on the bottom channel stops.



6. Reattach the extension plate using the screws you removed earlier.

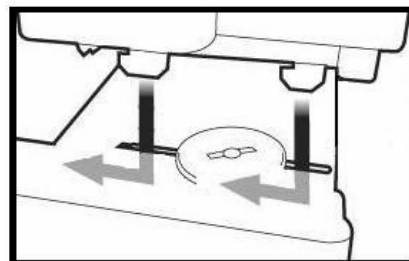
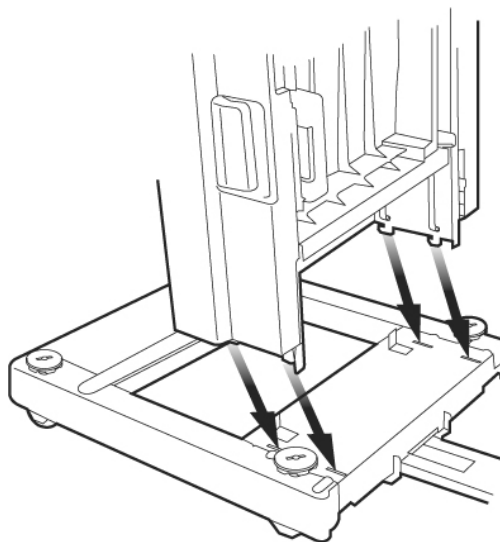


7. Turn the inverter around and reinstall the brackets.

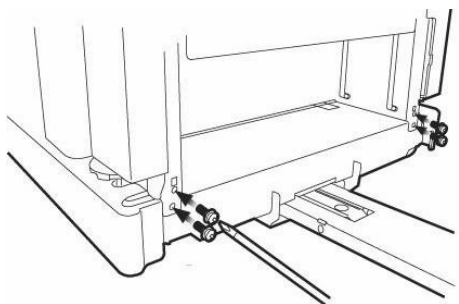


Step 3: Assemble the Inverter

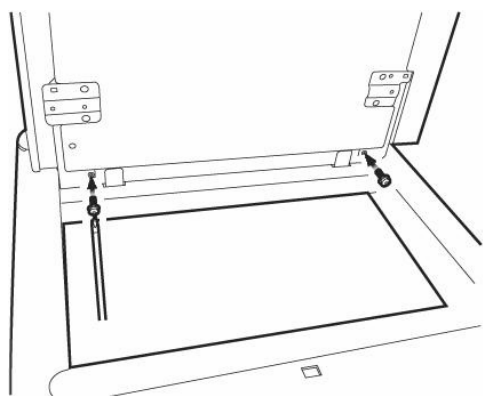
1. Place the hooks on the bottom of the inverter into the slots on the inverter stand, then slide the inverter to lock the hooks in place.



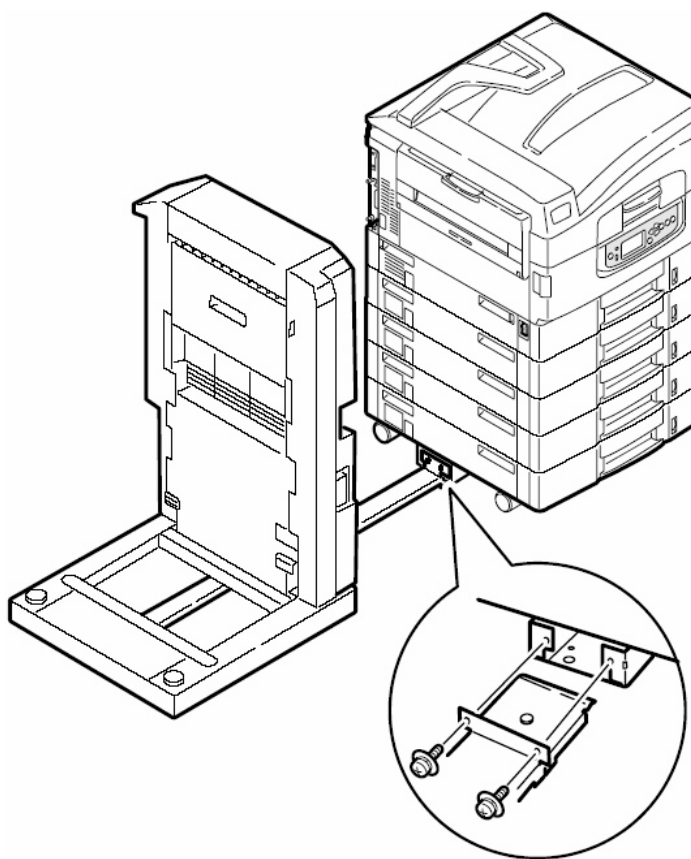
2. Attach the front of the inverter to the stand using two screws on either side.



3. Attach the back of the inverter to the stand using one screw on either side.

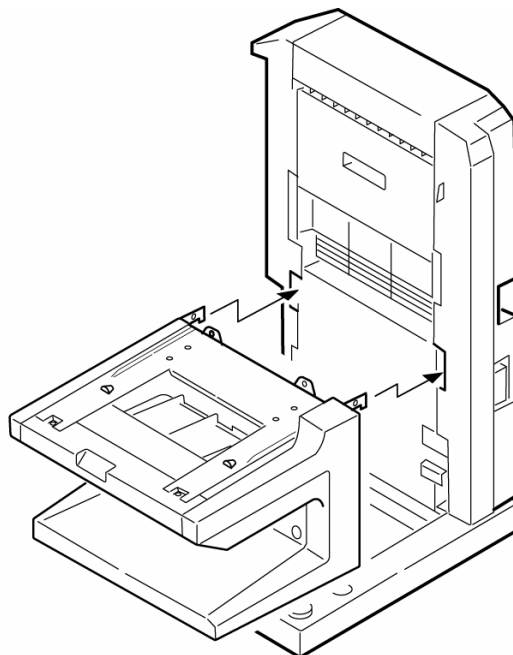


4. Attach the guard rail on the inverter stand to the printer using 2 screws.

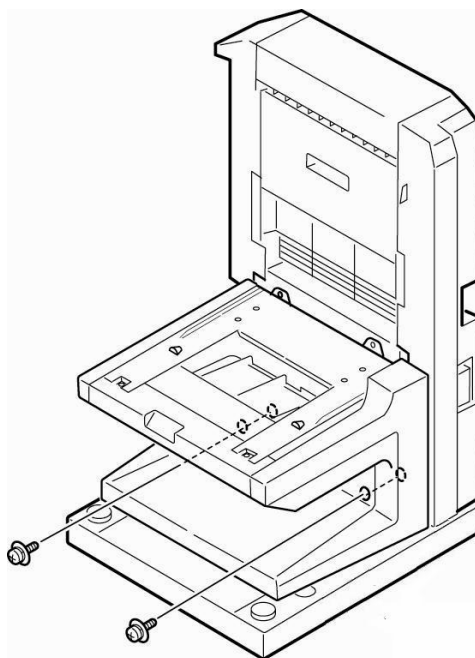


Step 4: Assemble the Finisher

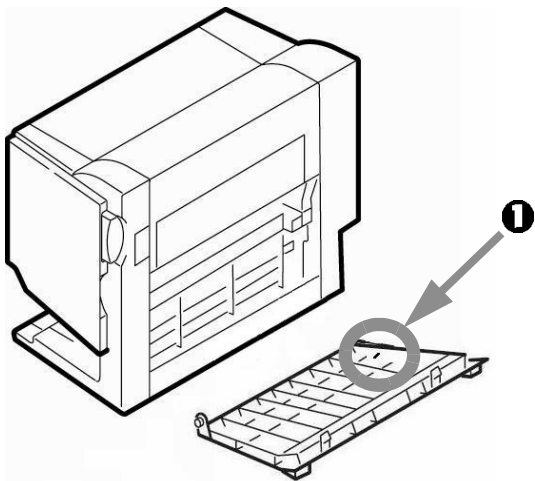
1. Hook the finisher stand onto the inverter.



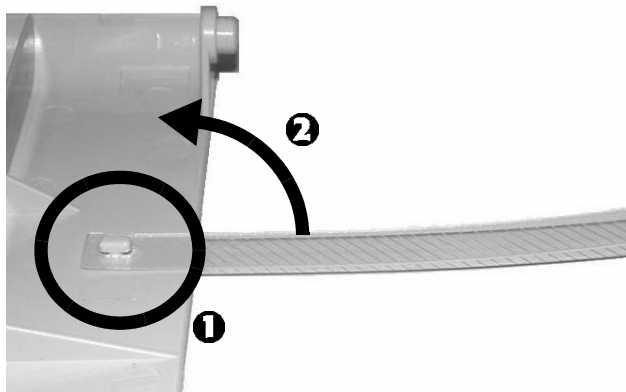
2. Attach the finisher stand to the inverter with 2 screws.



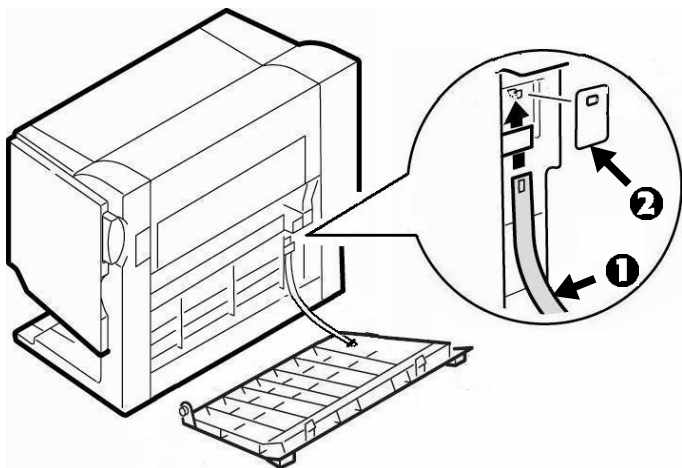
3. Place the finisher cover near the back of the finisher. Locate the tab (❶) on the right side of the cover.



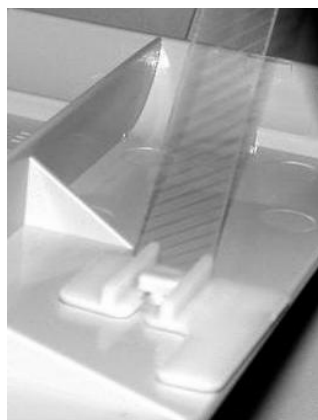
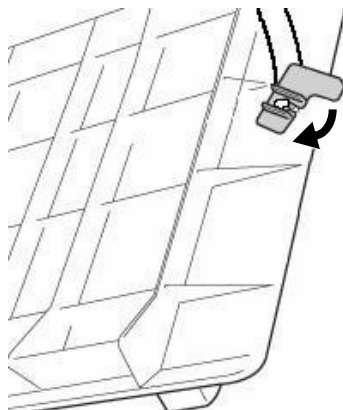
4. Hold the clear band perpendicular to the cover and slip one end over the tab (❶), then pivot the band 90 degrees (❷) so that it is aimed toward the finisher:



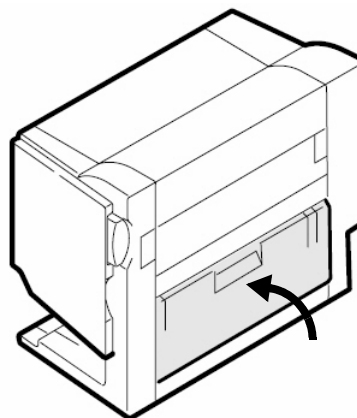
5. Slip the other end of the band (❶) through the retainer on the finisher and secure it with the small stopper (❷).



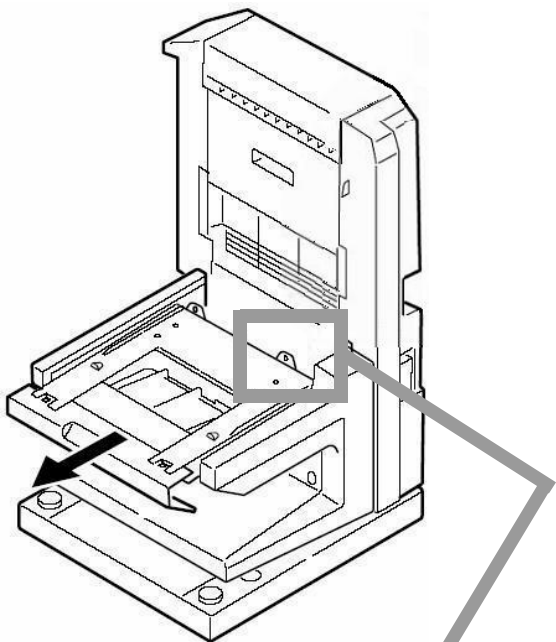
6. Place the large stopper over the tab on the cover and turn it to lock it in position.



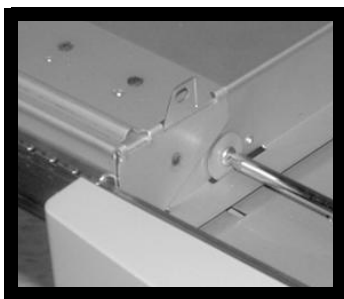
7. Attach the cover to the finisher and close it.



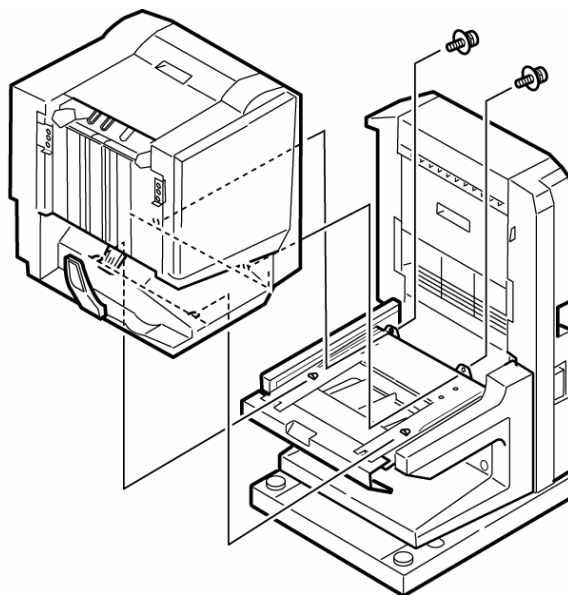
8. Pull the finisher platform about half way out, then loosen the screw on the locking piece (❶: viewed from the opposite direction) so that it drops through the slot below it. This keeps the platform from moving while you attach the finisher to it.



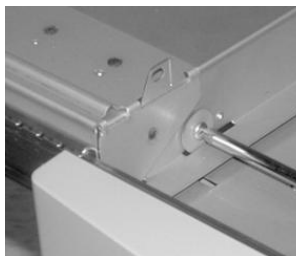
❶



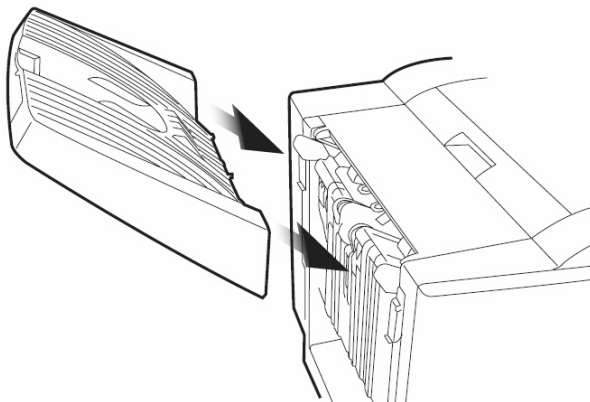
9. Position the finisher on the stand and attach it with two screws from the back.



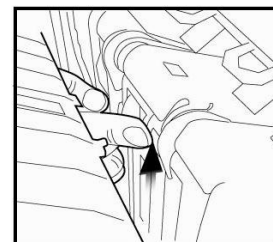
10. Lift the locking piece back up and tighten the screw firmly. Be sure it's out of the way and the screw is tight—otherwise the platform will not move freely.



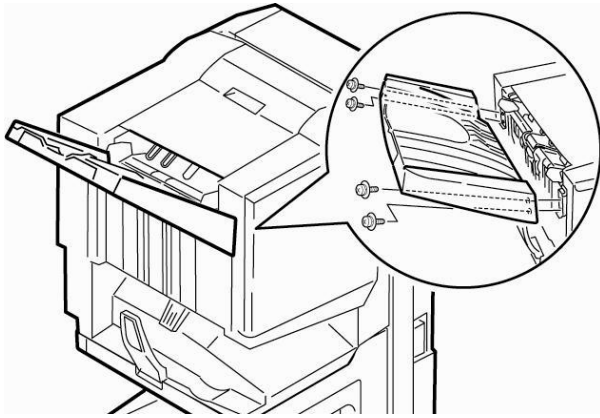
11. Install the stacker, making sure the hooks are firmly engaged and that the *lever on the finisher is positioned above the stacker* (❶).



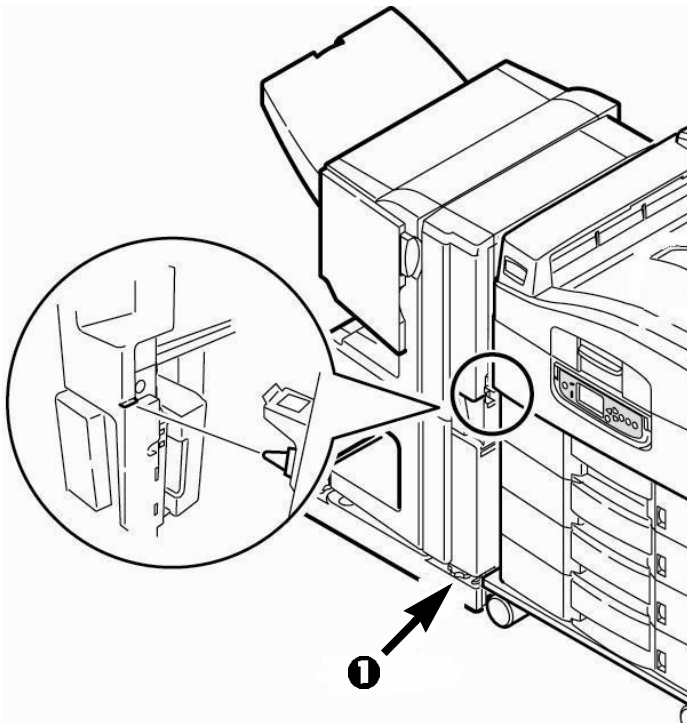
❶



12. Secure the stacker with four screws.



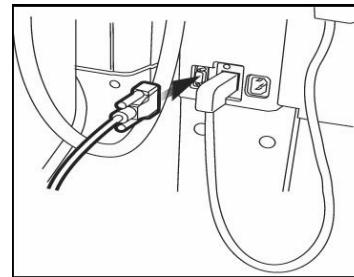
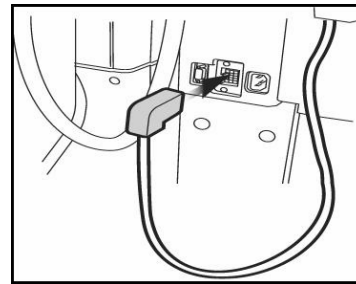
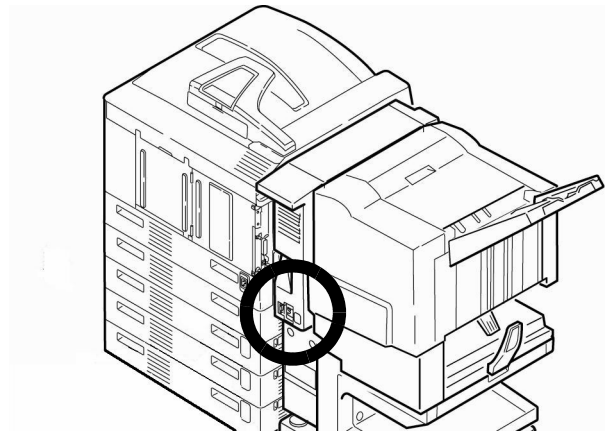
13. Push the finisher against the printer until the prongs on the printer brackets fit into the holes in the finisher.



Note: If you need to, turn the levellers (❶) on either side of the finisher to raise or lower it so the holes and prongs align properly. Make sure the finisher is level.

Step 5: Make Connections

1. Connect the finisher's cable to the inverter (❶). Use the cable supplied to connect the inverter to the printer (❷).



2. Plug the power cord supplied into the inverter, then connect it to a suitable grounded outlet.
3. Reconnect the printer's interface cable.
4. Plug in the printer's power cord and turn on the printer.

Note: When the printer is turned on, power is supplied to both the printer and the finisher.

Application Notes & Tips

Using the Single Staple Feature

There is a Staple dropdown selection within the Finishing Properties of the Fiery.

There are 4 single staple options within that dropdown. The choices are:

- Top Left Horizontal
- Top Left Vertical
- Top Right Horizontal
- Top Right Vertical

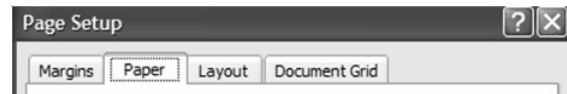
Use the following procedure for these choices to work correctly.

1. Configure the trays for the proper orientation (SEF or LEF).
2. Select the Page Size within Paper Source to SEF or LEF.
3. For SEF, select Top Left Horizontal or Top Right Horizontal.
4. For LEF, select Top Left Vertical or Top Right Vertical.

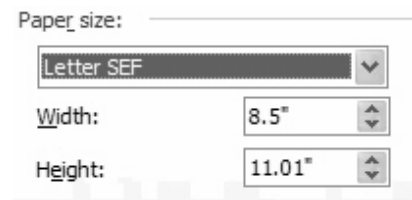
Saddle Stitching on Letter Paper

This section explains how to saddle stitch with Letter size paper, using the Postscript Driver (PS) and MS Word as an example.

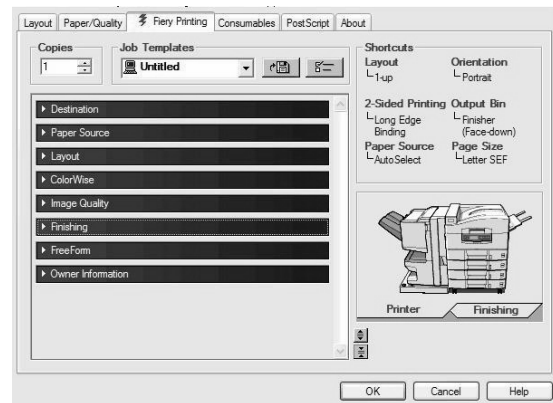
1. Click File then Page Setup.
2. Under Page Setup click on the Paper tab.



3. Choose the correct Paper size. then click Ok.



4. Click File and select Print. The Printer dialog box appears.
5. Click Printer Properties. The Printer Properties dialog box appears.



6. Change the following settings under the appropriate dropdown list.

Paper Source

- Paper Size: Letter SEF (Short Edge Feed)

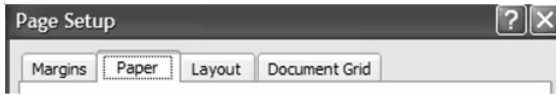
Finishing

- 2-Sided Printing: Long Edge Binding
 - Output Bin: Finisher (Face-down)
 - Staple: Saddle Stitch
 - Booklet Maker: Standard Booklet
7. The printer is now ready to print.
 - Make sure that at least one tray has SEF paper loaded.

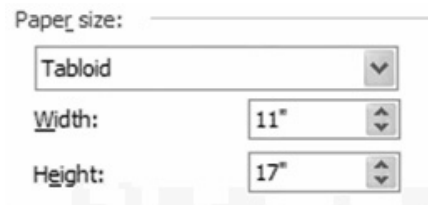
Saddle Stitching on Tabloid Paper

This section explains how to saddle stitch on Tabloid size paper, using the Postscript Driver (PS) and MS Word as an example.

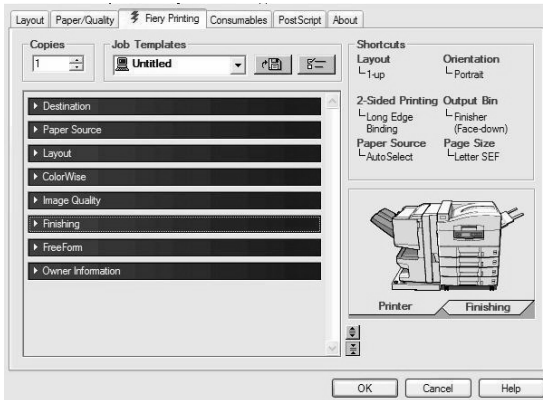
1. Click File then Page Setup.
2. Under Page Setup click on the Paper tab.



Choose the correct Paper size. then click OK.



3. Click File and select Print. The Printer dialog box appears.
4. Click Printer Properties. The Printer Properties dialog box appears.



5. Change the following settings under the appropriate dropdown list.

Paper Source

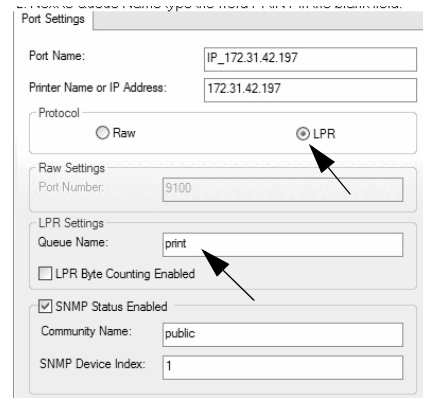
- Paper Size: Tabloid

Finishing

- 2-Sided Printing: Long Edge Binding
 - Output Bin: Finisher (Face-down)
 - Staple: Saddle Stitch
 - Booklet Maker: Standard Booklet
6. The printer is now ready to print.

If you have formatting problems

- Check the TCP/IP port settings—some default settings can create problems:
 - a. Change the Protocol from Raw to LPR.
 - b. Type in PRINT as the Queue Name.



- Install the LPR utility that comes with your printer.