



# Integrated Document Workflow with Cloud and Email Connect Features!



Connect



Scan



Print



## IT ADMIN

*We moved to cloud services including Microsoft Office365® and Box™. Looking for an easy way to move old document workflows to new.*

***We could implement document scan to Microsoft Office365 and Box without a complex system. Sharp MFPs offer built-in features to connect popular cloud storage and email services!***



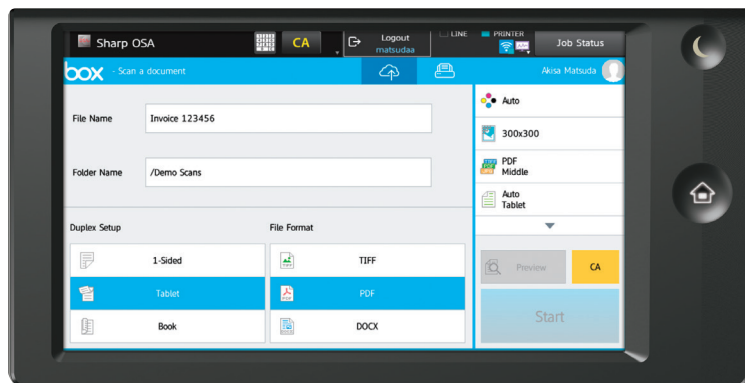
## END CUSTOMERS

*My organization adopted a cloud document storage service and I want to minimize disruption and changes to existing processes that involve paper documents.*

***Our new Sharp MFP is easy to use with minimum learning required! Simply login and scan documents to my cloud folders!***

# ULTIMATE SCAN & PRINT EXPERIENCE WITH SHARP MFP'S CLOUD AND EMAIL CONNECT FEATURES

Through the cloud/email connect feature on Sharp's new generation of multifunction products, organizations can seamlessly integrate their paper-based documents workflows with popular cloud services. For optimal user experience, single-sign-on is supported. Users can login once and conveniently scan documents or access cloud-stored documents directly from the Sharp MFP while IT administrators maintains full security control.



Intuitive scanning and printing experience

## Security and Convenience with Email connect feature

- Scan and send emails from logged in users
- Access to your contact list (Global and Personal)
- Sent history in Outlook® or Gmail clients
- Applies Exchange server rules and security (e.g. size limit, destination restrictions)

## Cloud Connect For:

- OneDrive® for Business
- SharePoint Online®
- Google Drive™
- Box Connector (The application is available through authorized Sharp dealers)

## Email Connect For:

- Exchange Server
- Exchange Online/Office365
- Gmail™ Webmail

## System Requirements

### Supported Sharp MFP Models:

MX-3070N/3570N/4070N  
MX-3050N/3550N/4050N \*  
MX-5050N/6050N\*  
MX-5070N/6070N  
MX-6580N/7580N \*\*  
MX-M905 \*\*

### \*The following options are required:

- MX-AMX2 Application Communication Module
- PS3 Expansion Kit
- Direct Print Expansion Kit  
(Optional for Microsoft Office® file printing)

- \*\* • Supports Exchange on premise only
- SSO for Box is not supported

# SHARP®

SHARP ELECTRONICS CORPORATION  
100 Paragon Drive, Montvale, NJ 07645  
1-800-BE-SHARP • www.sharpsusa.com

Design and specifications subject to change without notice. Sharp, Sharp OSA and all related trademarks are trademarks or registered trademarks of Sharp Corporation and/or its affiliated companies. Microsoft, Office 365, Outlook, Sharepoint and OneDrive are registered trademarks of Microsoft Corporation in the United States and/or other countries. Box is a trademark of Box, Inc. Google Drive is a trademark of Google, Inc. All other trademarks are the property of their respective holders.