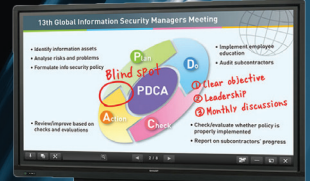
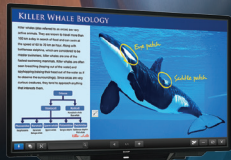


SHARP

WORKFLOW SOLUTIONS FOR HEALTHCARE



"2019 Copier MFP Line of the Year"

Gain extended document security and workflow capabilities in healthcare environments with Sharp multifunction document systems.

A NEW BENCHMARK OF INNOVATION FOR HEALTHCARE PROVIDERS

medical

Sharp multifunction document systems offer innovative workflow solutions for healthcare to help providers streamline record processing, integrate with Electronic Healthcare Record (EHR) Systems and Electronic Medical Record (EMR) Systems, and embrace mobile technology, while also helping meet healthcare regulations including HIPAA compliance.

Highlights

- Scan clinical documents, patient records and more with intelligent routing to popular document management systems.
- Maintain tighter document security with powerful access control and confidential printing features. The Sharp multifunction document systems are also compatible with popular print release and management applications, such as PaperCut MF™ and YSoft® SafeQ, as well as Kayleigh job accounting software.
- Gain convenient, secure access to printing from mobile devices, such as tablets and smartphones. Sharp can also help healthcare providers adopt Bring Your Own Device (BYOD) initiatives through innovative applications and support for popular mobile platforms and operating systems.
- Multi-level security features help protect confidential information and meet regulatory requirements such as HIPAA. Sharp's convenient End-of-Lease feature can also erase all data and personal information from the device at time of trade-in.
- Sharp offers a range of content management and workflow solutions that can help healthcare providers of all sizes not only enhance traditional printing and scanning, but also embrace emerging technologies, which can help reduce costs and improve patient care. Coupled with other Sharp products for healthcare, including professional digital signage displays, these workflow and communication solutions can help streamline collaboration and improve efficiency in healthcare facilities.

Communicate healthcare services, educational seminars and more with Sharp professional digital signage displays.



ADVANCED TECHNOLOGIES FOR HEALTHCARE

Increase productivity, reduce costs and meet healthcare regulatory compliance with secure, easy-to-use, interactive workflow processes.

Sharp works closely with leading EHR/EMR application providers that are helping healthcare organizations make the transition to electronic healthcare records. Sharp offers innovative solutions to help providers enhance workflow processes for the 21st century, while helping them meet regulatory compliance, control costs, and ultimately improve patient care.

Easily Integrate with Enterprise Document Management Systems

Sharp multifunction document systems integrate with popular enterprise document management systems, such as **OnBase® by Hyland Software®**. Scan clinical documents with intelligent routing with Sharp Partner Program member applications such as Psigen PsiCapture and AIP Connect from Sharp.

Scan Insurance Cards More Easily with Sharp's ID Card Shot Feature

With the standard ID Card Shot feature, users can scan both sides of an insurance card and send or save as a single-page document, which helps save time and enhance efficiency.



Centrally Managed Printing Helps Lower Costs and Improve Efficiency

Sharp in combination with Sharp Partner Program members offer print management solutions for all sizes of healthcare providers to help lower printing costs, manage user access and help maintain security. Confidential printing holds jobs at the MFP and only releases them when the user enters a PIN or is authenticated to the MFP. For advanced workflows, cost accounting systems such as **PaperCut MF** and **Kayleigh** job accounting software offer seamless integration and can charge user accounts for print costs.

Securely Print Patient Information and other Files from Mobile Devices

Easily print files from tablets and smart phones with Sharpdesk® Mobile, a downloadable app available for most common mobile devices.¹ Sharpdesk Mobile works with Confidential Printing, enabling users to send a job to the MFP from their mobile device and release it only when a PIN is entered or when authenticated. Sharp also supports popular mobile technologies such as **Apple® AirPrint®** and **Android™** printing framework to help embrace BYOD.

Safeguard Your Information with Leading-edge Security Features

Sharp MFPs are armed with multi-layered security features, including **Firmware Attack Prevention** and **Self Recovery**, which can help identify a malicious intrusion and restore the machine firmware to its original state. Also, the new **Application Whitelisting** feature detects attempts to the machine file system and denies access if the source data is not on the whitelist.



Case Study

Medical Clinic, Tampa Florida

BUSINESS CHALLENGES

A busy medical clinic needed to find a better way to scan in and search patient records. Each day, the office staff would batch-scan up to 300 pages of records, a time consuming task. Also, each record had to be renamed and moved into a specific folder.

TECHNOLOGY SOLUTIONS

A variety of Sharp document systems and software solutions were deployed to simplify scanning and to make it easier to locate and retrieve records. The Sharp MFPs with dual head scanning dramatically reduced the time required for batch-scanning tasks. In addition, image capture and routing software made it easier to manage records within their existing infrastructure, and proximity card readers enabled employees to use their ID cards to quickly login at the MFPs. The total solution included the following:

- Five Sharp workgroup MFPs with Scan²™ technology
- Drive | Image™ document capture and routing software
- RF Ideas proximity card readers

PROVEN RESULTS

The new Sharp document systems and software solutions enable the medical staff to scan and manage patient records more easily and with greater efficiency. End-of-day scanning tasks can now be completed in significantly less time.

¹ Visit www.sharppusa.com for a list of supported devices.

SHARP MULTIFUNCTION DOCUMENT SYSTEMS

Advanced document solutions that can streamline workflow in healthcare environments.

Sharp multifunction document systems deliver powerful performance with stunning image quality and exceptional ease-of-use. Sharp's current models support the latest networking and imaging technologies available today, all to create document systems that deliver the workflow solutions that healthcare environments need. Also, with 30+ models that offer a common user experience and consistent feature set, training and operation is easier than ever.

Key Features

- **Ease of Use** – Award-winning touchscreen display offers a user-friendly graphical interface with simplified Easy Modes, integrated user guides and quick access to network services. With Sharp's available MFP Voice feature, you can interact with the machine with the power of natural language.
- **Productive Features** – Standard full multifunction capability out-of-box, including copying, network printing and color network scanning, combined with Sharp's Microfine Toner Technology for long-lasting, high-quality output page after page.
- **Workplace Friendly** – Integrates seamlessly with today's complex network environments, and supports popular cloud services and mobile technologies. With Sharp's new Application Portal, administrators can add new apps or update existing apps right from the MFP.



"PaceSetter Award in
Ease of Use 2018–2019"



Sharp's customizable touchscreen display offers a user-friendly graphical interface, and is common across 30+ models.

Designed to deliver performance and productivity.

- Built-in **retractable keyboard** on most models simplifies email address and subject line entries as well as repetitive scanning tasks and user authentication.
- **Compact PDF** feature dramatically reduces the file size of scanned color documents, resulting in decreased network traffic and more efficient use of disk and cloud storage.
- Standard **duplexing document feeder** on most models scans both sides of a document in a single pass at speeds up to **220 images per minute (ipm)**, putting less wear on the feeder and your originals.
- **Customizable touchscreen** display with a clean design enables easy access to features and functions when setting up jobs.
- Scan and print files from tablets and smart phones using **Sharpdesk® Mobile**, a free downloadable app for most mobile devices.
- **Standard security platform** includes 256-bit encryption, up to 10-times data overwrite and an End-of-Lease feature that can erase all data and personal information at time of trade-in.
- **MFP Voice feature** supported on most models enables users to control the device using simple verbal commands with **Amazon Alexa**.
- Sharp MFPs support popular mobile technologies such as **Apple AirPrint** and **Android** print framework.
- **Serverless Print Release** feature available on most models enables users to securely print a job and release it from up to six Sharp MFPs that are on the same network.
- Access **popular cloud applications**, including Microsoft OneDrive for Business, SharePoint Online, Box, Dropbox and Google Drive with Sharp's Cloud Connect features.
- The **Adobe Embedded Print Engine** available on most models allows users to direct print PDF files from cloud services with greater accuracy and faster performance when on a deadline.
- Supports **Universal Print** (with Microsoft Connector)



SHARP®

SHARP ELECTRONICS CORPORATION
100 Paragon Drive, Montvale, NJ 07645
1-800-BE-SHARP • www.sharpsusa.com

Sharp, Sharp OSA, Sharpdesk, My Sharp, AQUOS BOARD, and all related trademarks are trademarks or registered trademarks of Sharp Corporation. OnBase is a registered trademark of Highland Software Incorporated. AutoStore is a registered trademark of Nuance Communications Incorporated. PsiCapture is a trademark of Psigen Software Incorporated. PaperCut MF is a trademark of PaperCut Software International. SafeQ is a trademark of YSoft Corporation. Drive Image is a trademark of Drive Incorporated. All other trademarks are the property of their respective owners. Microsoft OneDrive and SharePoint are trademarks or registered trademarks of Microsoft Corporation. Android, Chrome, Gmail, Google Drive and Chromebook are trademarks or registered trademarks of Google LLC. AirPrint is a registered trademark of Apple Inc. Adobe, the Adobe logo, PostScript, and PostScript 3 are either registered trademarks or trademarks of Adobe in the United States and/or other countries. Amazon and all related logos and motion marks are trademarks of Amazon.com, Inc. Design and specifications subject to change without notice.