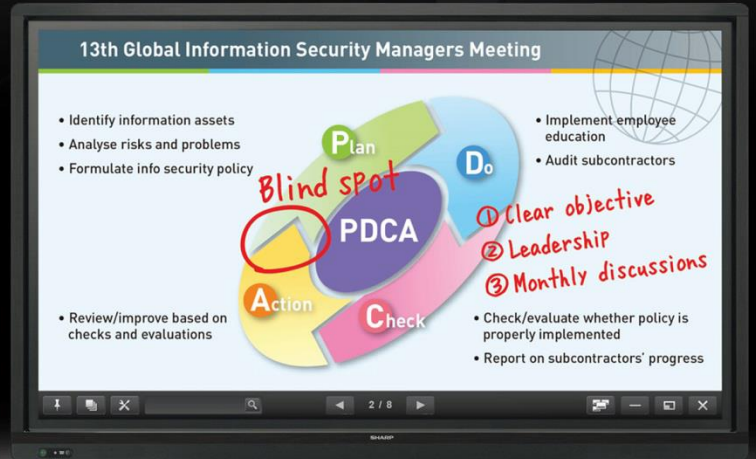


Shuttle®

For use with SHARP

AQUOS BOARD™

Interactive Displays

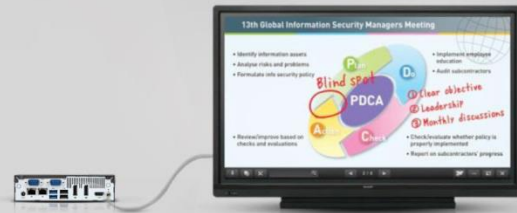


FULL AQUOS BOARD SOLUTION

- Intel® H81 Express Chipset
- Intel® Core™ i5-4590S Processor
- 4GB RAM
- Windows® 7 Professional 64BIT (with Recovery DVD)
- Built-In WiFi
- Direct Mounting Solution for PC and Power Adapter to AQUOS BOARD
- RJ11 to DUPONT 2P cable lets you start-up and shut down the PC directly from the AQUOS BOARD

Shuttle's PN-SPCi5W7H Offers

- High Performance i5 Slim Form Factor
- Quiet Operation
- Low-Power Consumption
- Support for Dual Full HD Displays



EXCLUSIVE FOR SHARP

SERVICE	Pre-Image all storage drives with SHARP Golden Image. Imaged drive includes: Sharp Pen Software and Sharp Touch Display Link 2 Software.
HARDWARE	Custom AQUOS BOARD mounting solution
WARRANTY	3-Year Limited Warranty - administered by Sharp Electronics Corporation
INSTRUCTION MATERIAL	Includes an installation guide that contains instructions for mounting media player, power adaptor bracket and RJ11 external power-switch hook up

For more info on please contact: ProLCD@SharpUSA.com or visit www.sharpusa.com/aquosboard

© 2015 Shuttle Computer Group, Inc. All rights reserved. Specifications are subject to change without notice. All screen images are simulated. Sharp, AQUOS BOARD and all related trademarks are trademarks or registered trademarks of Sharp Corporation and/or its affiliated companies. Windows is either a registered trademark or trademark of Microsoft Corporation in the US and/or other countries. Intel is a trademark of Intel Corporation in the US and/or other countries. All other brand names and product names may be trademarks or registered trademarks of their respective owners. Not responsible for any photographic or typographic errors. Photos shown may vary from actual look. (Last Revised: June 2014)

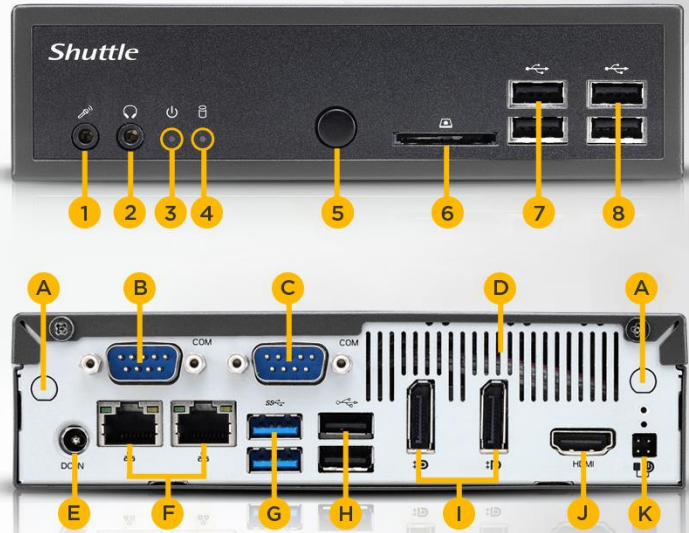
PN-SPCi5W7H PRODUCT DETAILS

FRONT

- 1) Microphone Input
- 2) Headphone Input
- 3) Power LED
- 4) Hard Disk LED
- 5) Power Button
- 6) SD Card Reader
- 7) 4 x USB 2.0

BACK

- A) 2 x WiFi Antenna Input
- B) RS232/RS422/RS485
- C) RS232
- D) Ventilation Grill
- E) DC Power Input
- F) 2 x RJ45 Gigabit LAN
- G) 2 x USB 3.0
- H) 2 x USB 2.0
- I) 2 x DisplayPort(DP) Video Port
- J) HDMI Video Port
- K) Connector for external power button (two pins, 2.54 mm pitch)



1.69 in.

SLIM DESIGN

- Slim 1.3 Liter Metal Chassis, Black
- 7.48 x 6.50 x 1.69 in (LWH)
- Operating Temperature: 0-50°C

ENERGY-SAVING

The power consumption mainly depends on the processor in use and its load. Using an Intel® Core™ i7-4790S Quad-Core processor consumes about 27W in idle mode. Under full load, the power consumption is 52W (94W respectively).

Note: The maximum output wattage of the power adapter is specified with 90W. Assuming, the adapter's efficiency is 90%, the input wattage can be up to 100W.

KENSINGTON LOCK



This is a small, metal-reinforced hole which is part of an anti-theft system. PN-SPCi5W7H provides an appropriate hole on both sides of its chassis. The lock-and-cable is not included.

GRAPHICS

- Integrated Intel® HD Graphics
- Video-outputs: HDMI and DVI-I

For more info on please contact: ProLCD@SharpUSA.com or visit www.sharpusa.com/aquosboard

© 2015 Shuttle Computer Group, Inc. All rights reserved. Specifications are subject to change without notice. All screen images are simulated. Sharp, AQUOS BOARD and all related trademarks are trademarks or registered trademarks of Sharp Corporation and/or its affiliated companies. Windows is either a registered trademark or trademark of Microsoft Corporation in the US and/or other countries. Intel is a trademark of Intel Corporation in the US and/or other countries. All other brand names and product names may be trademarks or registered trademarks of their respective owners. Not responsible for any photographic or typographic errors. Photos shown may vary from actual look.
(Last Revised: June 2014)

SHARP